

Enjoy a pleasant Penguin adventure with Xpark AR!

1 Download the APP



Download on the App Store
GET IT ON Google Play

2 Move your smartphone towards the AR photo spots

Take pictures or videos with the pop-up characters and share with your friends via SNS right away!



Currently there are 3 AR photo spots in Xpark. Be prepared for a surprise after you take photos in all 3 spots!

3 AR-related souvenirs are available at Xfun shop! Extend your adventure with the penguins!

Enjoy more fun with AR as you play with the AR products in the Xfun shop! A great souvenir for yourself and your family and friends!



Other AR original gifts
Xpark Penguin cookies
Xpark folder

After you take photos in all 3 AR photo spots, try taking a photo for the AR mug. A special virtual, augmented reality is for you to discover!

Operating Hours

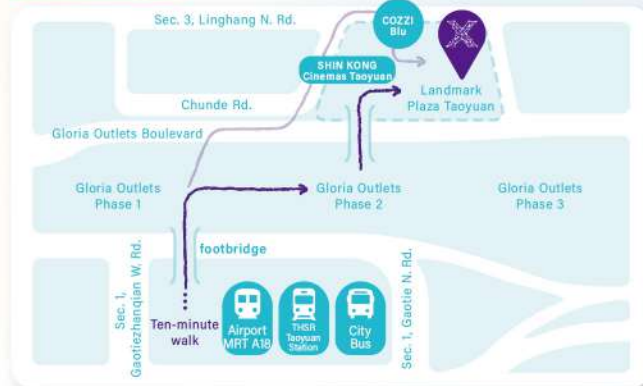
Opening hours may differ due to different time of the year and are subject to change. Please visit Xpark official website for more information.

Admission Fee

Ticket Type	Price	Applicable to
Adults	NT\$600	Adults aged 18 and older
Students	NT\$430	Students aged 12 and above with a valid student ID
Children	NT\$270	Children aged between 4 to 11
Concession	NT\$270	Pregnant women; people aged 65 and above; people with disability certificates and their companions (one companion each visit)

- Children under 4 years old accompanied by parents are admitted free of charge. Please refer to the official website for **group rates** or other special offers.
- Please reserve your tickets in advance at Xpark official website. Tickets are available also at the venue only when advance tickets for a specific time slot are not sold out, while supplies last. For group tickets or other offerings, please visit Xpark official website for more information. For corporate ticketing, please contact Xpark sales team.

Transportation



- Per one adult ticket can redeem one parking hour at Landmark Life Plaza. To redeem, 1) One ticket for one car only. 2) Please scan the QRcode of a valid ticket at the payment kiosk in the parking lot.
- For those who have to walk through Gloria Outlet to arrive at Xpark:
1) during the opening hours of Gloria Outlet, please use the overpass near Project II
2) out of the opening hours of Gloria Outlet, please walk through the Gloria avenue and go through Chun-de road to the Landmark Life Plaza

Official social media account



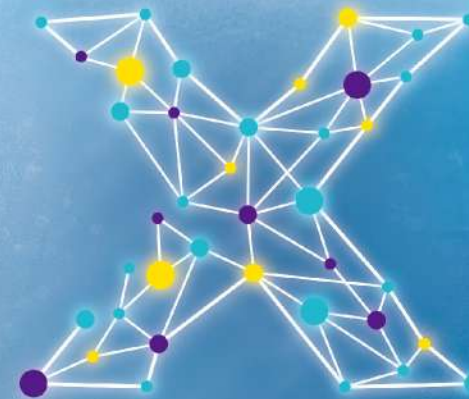
Notice to visitors

For better viewing quality and the safety of the creatures, please pay attention to the following tips and cooperate with our staff. We wish you all a wonderful experience!

- Food and drinks from outside vendors are not allowed.
- No smoking
- Pets are not permitted (except service dogs).
- No flash lights for photos.
- No tripods or selfie sticks for photos.
- Please maintain a safe distance from the display window. Tapping and climbing are not permitted.
- Loud noises or loudspeakers are not allowed.
- No feeding to any creature on exhibit.
- Xpark reserves the right to advise or deny admission into the facility should there be any circumstances that affect the order of the visit or the safety of the creatures.
- During renovations, constructions or special events, Xpark may close certain parts of the exhibition area.

202310版

English



Xpark

Explore Xpark

台灣横浜八景島股份有限公司
Taiwan Yokohama Hakkeijima Inc.
320 桃園市中壢區春德路105號 TEL:03-2875000

Animal Exhibition License No.: 桃動展字第109001號

Ad-hoc activities

The exact date, time and number of participants are subject to the venue. Please visit Xpark official website for the registration and more information.(Language:Mandarin)

•Discovery Reef•

Step into the intertidal ecosystem with our feeding staff in the "Discovery Reef"! Roll up the pants a bit for a great experience in the oscillating water. Through up-close observation and expert guidance, visitors can learn more about intertidal ecosystems and the amazing diversity.

Registration fee	NT\$150 per person	Number of people	10 persons per session
Sessions	11:30/13:30/15:30/16:30		

•Backyard Tour•

"Where does the water in the aquarium come from? How does an aquarist spend a typical day?" Guests are invited to experience the daily routine of the aquarists with detailed explanations around the Life Support System(LSS), baiting, biological quarantine and jellyfish breeding, all taking place in the backstage world of Xpark!

Registration fee	NT\$150 per person	Number of people	15 persons per session
Sessions	11:30/15:30		

LINNÉ LENS

LINNÉ LENS Instant Illustration Book

Add captions to the pictures you collect and create a unique illustration book!



To download the app, please scan the QRcode above

Unlimited free use within the Xpark facilities

10 times of free use a day outside the Xpark facilities

Multiple languages available: Japanese, English, Traditional Chinese, Simplified Chinese, Korean, and Thai

* GPS feature is required



Xpark is the first overseas aquarium of Yokohama Hakkeijima, a subsidiary of the Seibu Group. Yokohama Hakkeijima operates four aquariums and one zoo in Japan, hoping to bring joy and emotion to the world through living creatures.

Design concept

Xpark represents a parallel universe to the Earth. By utilizing the most advanced technology, we create experiences that touch the five senses of the visitors, who will be taken to the amazing corners of the planet, feeling inspired, healed and refreshed.

Area introduction

Xpark has a total of **13** barrier-free exhibition halls spread out over **3** floors.

- Ticket Counter
- Service Counter
- Elevator
- Escalator
- Toilet
- Accessible Toilet
- Breastfeeding Room
- Medical Room



The great variety of fish species and the ever-changing underwater terrain of the east coast of Taiwan are presented here in a stunning large tank. As natural lights penetrate, the tank captures various reflections during different times of the day and night. In the daily musical sessions, schools of fish would swirl and twirl to the sound of music.



Xcafe by PRONTO

Enjoy the meal and watch the penguins showing off various poses as if they are floating in midair! Aside from the super popular "penguin latte", the café also serves a wide range of delicious and photo-ready pasta and dessert dishes.

1 Formosa 福爾摩沙

Before you start your visit, you can use the following in-house services:
 Free Wi-Fi Audio guides



2 Diving in Coral Sea 珊瑚潛行

In this 180-degree panorama facility, coral reefs in all their vivid colors and a kaleidoscope of darting fish spread out to create immersive experiences, bringing nature's fabulous design to life before our very eyes.

7 Interactive Zone 虛實互動

Draw one-of-a-kind marine creatures from the free-combining DNAs with the cutting-edge multimedia gear! Let your imagination run wild! Merging the virtual and the real world with motion-sensing technology, you can save the ocean! Learn more about marine conservation while meandering through the limitless waters of Xpark.

4 Rainforest Adventure 雨林探險

Warm and damp, the rainforest is recreated here with mysterious fogs. Animals of various shapes and sizes thrive on the trees, across the ground and under the water with impressive vitality.

8 Healing Jellyfish 癒見水母

With "Nature Changes Seasons" as its theme, jellyfish of varying hues swim all around you in a show of light and shadow that will lift your spirit. Infinite mirrors reflect the scene, giving it a surreal quality.

9 Penguin Life 企鵝奇遇

To recreate a penguin habitat, the water tank is separated into two, representing the sea and the land areas on each side, connected by a bridge above the visitors. The penguins would swim over to reach for food in the water area, allowing visitors to observe their extraordinary underwater skills. Their lovely poses will for sure leave unforgettable fond memories!

11 Animal Land 世外桃源

Here, you get to see the lazy capybaras, the binturongs with a sweet popcorn smell, and the playful goats, all cared for and fed by the keepers in a healthy and clean environment. Through the design of the exhibition, you can observe the most natural and relaxed side of these small animals!

